

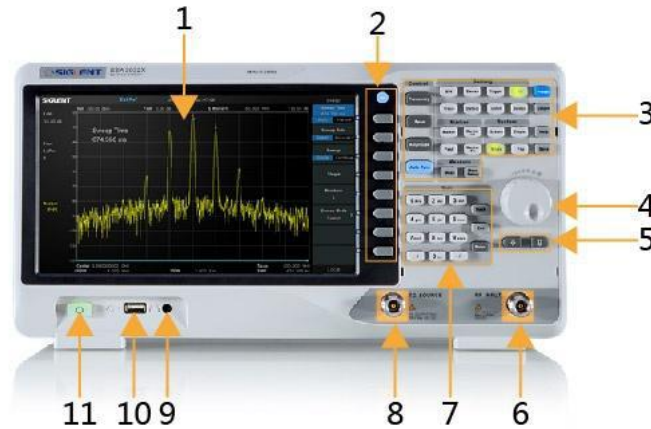
## Revision History

Version	Revision
V1.2.9.2a 2018/11/1	<ol style="list-style-type: none"> <li>1. This firmware must be upgraded from V1.2.8.1 or later. If your SSA3000X has an earlier version, please update to V1.2.8.1 first and then proceed to update to the latest version.</li> <li>2. Add trigger slope in Video Trigger</li> <li>3. Optimize Trace Math, and SCPI command</li> <li>4. Optimize the noise during Demod in zero span</li> <li>5. Optimize the screen text display</li> <li>6. Optimize the Auto Tune</li> <li>7. Optimize the log scale in CSV file</li> </ol>
V1.2.9.1 2018/04/10	<ol style="list-style-type: none"> <li>1. This firmware must be upgraded from V1.2.8.1 or later. If your SSA3000X has an earlier version, please update to V1.2.8.1 first and then proceed to update to the latest version.</li> <li>2. Fixed bugs on peak search and next peak.</li> <li>3. Optimize SCPI commands for peak table, screenshot, etc.</li> <li>4. Optimize the LOG X-scale for EMI test.</li> <li>5. Optimize the Quasi-Peak detector accuracy for EMI test.</li> </ol>
v1.2.8.5a 2017/9/20	<ol style="list-style-type: none"> <li>1. This firmware must be upgraded from V1.2.8.1 or later. If your SSA3000X has an earlier version, please update to V1.2.8.1 first and then proceed to update to the latest version.</li> <li>2. Fixed v1.2.8.5 bugs on Refl Mode.</li> <li>3. Fixed v1.2.8.5 bugs on language and file.</li> </ol>
v1.2.8.5 2017/9/10	<ol style="list-style-type: none"> <li>1. This firmware must be upgraded from V1.2.8.1 or later. If your SSA3000X has an earlier version, please update to V1.2.8.1 first and then proceed to update to the latest version.</li> <li>2. Add 1 Hz/3 Hz RBW function.</li> <li>3. Fixed some bugs on SCPI.</li> <li>4. Fixed some bugs on sweep, Log scale, and display.</li> </ol>
V1.2.8.3 2017/6/10	<ol style="list-style-type: none"> <li>1. This firmware must be upgraded from V1.2.8.1 or later. If your SSA3000X has an earlier version, please update to V1.2.8.1 first and then proceed to update to the latest version.</li> <li>2. Improved the stability of sweep and avg detect.</li> <li>3. Fixed some bugs on sweep, frequency counter and Log-Log scale.</li> <li>4. Fixed some bugs on SCPI and the AMK option.</li> </ol>
V1.2.8.2 2017/2/14	<ol style="list-style-type: none"> <li>1. This firmware must be upgraded from V1.2.8.1 or later. If your SSA3000X has an earlier version, please update to V1.2.8.1 first and then proceed to update to the latest version.</li> <li>2. Add socket/telnet-scpi, you can operate remote control through LAN port without NI-VISA installed. Please see SSA3000X 's Programming Guide for more details.</li> <li>3. Change two limit lines in different colours.</li> <li>4. When quit from TG, stay in "Auto" sweep.</li> </ol>

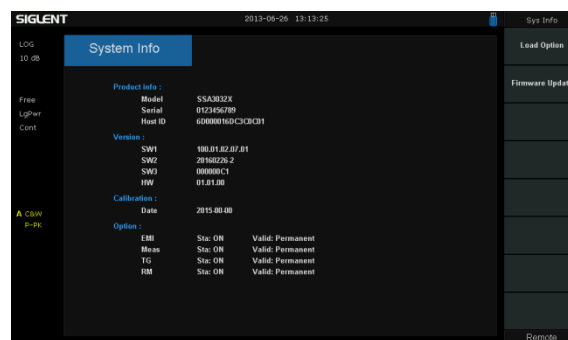
Version	Revision
	<ul style="list-style-type: none"> <li>5. Lower some spurs when FFT.</li> <li>6. Improve the stability.</li> </ul>
V1.2.8.1 2016/11/3	<ul style="list-style-type: none"> <li>1. Add "PNG " file type for screenshot.</li> <li>2. Support TG in RBW less than 30 kHz.</li> <li>3. Modify default TG output power, -20 dBm in spectrum analyzer mode and 0 dBm in reflection measure mode, and some other TG issues.</li> <li>4. Updating the format of "LIM " file. After this firmware , the old limit files will not be supported. You can recreate them through "EasySpectrum" free software easily.</li> <li>5. After this firmware, do not support downgrade operation.</li> </ul>
100.01.02.07.07 2016/6/29	<ul style="list-style-type: none"> <li>1. Add "amplitude correction editing functions"</li> <li>2. Add "input impedance switching function between 50Ω and 75Ω"</li> <li>3. Add "jpg format screenshot function"</li> <li>4. Add "Reset &amp; Clear function"</li> <li>5. Separate the "File Type" into "View Type" and "Save Type" in the file menu.</li> </ul>
100.01.02.07.06 2016/5/13	<ul style="list-style-type: none"> <li>1. Fixed "error importing calibration files into machine."</li> </ul>
100.01.02.07.05 2016/4/19	<ul style="list-style-type: none"> <li>1. Add USB-GPIB connect function</li> <li>2. Add boot reset function</li> <li>3. Fixed "Spectrum Monitor function can be opened when using normalize or reflection meas"</li> </ul>
100.01.02.07.03 2016/3/30	<ul style="list-style-type: none"> <li>1. Fixed "button does not respond after self test"</li> </ul>
100.01.02.07.02 2016/3/15	<ul style="list-style-type: none"> <li>1. Fixed " the device can not start up when start option is user configuration"</li> <li>2. Fixed " the problem of frequency count large errors"</li> <li>3. Fixed "the device can not hunt signal when setting zero span occasionally"</li> </ul>
100.01.02.07.01 2016/2/29	<ul style="list-style-type: none"> <li>1. Add "X log axis"</li> <li>2. Add "license inputbox"</li> <li>3. Add "file save alert dialog "</li> </ul>
100.01.02.07.00 2016/1/15	<ul style="list-style-type: none"> <li>1. Add "EMI function "</li> <li>2. File system upgrade</li> </ul>

## Update Instructions

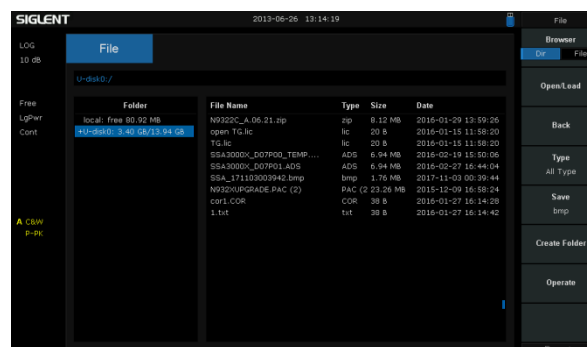
1. Copy the update file (\*.ads) to a FLASH type U-disk, and then connect the U-disk to the USB host port(10) of the instrument.

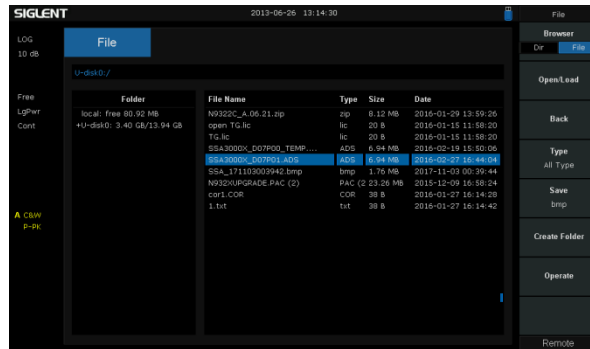


2. Press the **System** key on the front panel, and then softkey “System->System Info->Firmware Update”, to enter the interface of the file browser.

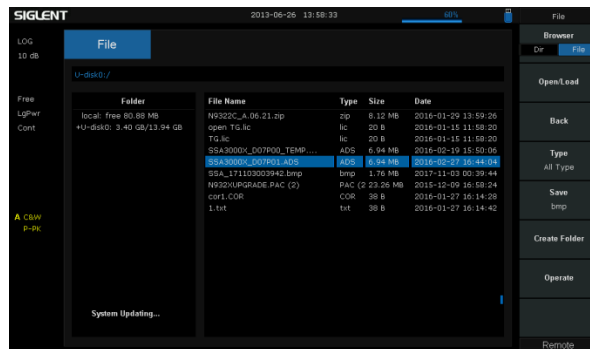


3. Select “U-disk” thru the knob on the front panel, press “Browser”, and then select the correct **ADS file** using the knob





- Press “Open/Load” to start the update. A progress bar is displayed during the update. When updating complete, the spectrum analyzer will restart automatically.



**WARNING:**

**DO NOT shut down the instrument during updating**